

ANTIQUE & COLLECTOR CAR SHOW FLEA MARKET & CRAFT SALE



ANTIQUE AND CLASSIC CAR CLUB OF CANADA
"Rideau Lakes Region"


Lombardy Fair Grounds

(6 miles south-west of Smiths Falls on Highway 15)
LOMBARDY, ONTARIO

SATURDAY & SUNDAY

June 1 & 2, 2024

**FLEA
MARKET
SATURDAY
& SUNDAY**

Proud supporters of 
Free camps for children with cancer

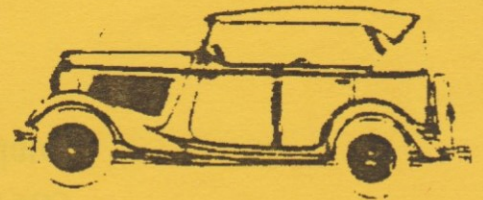
**CAR
SHOW
SUNDAY**

FLEA MARKET - (Saturday & Sunday)

- AUTOMOTIVE & AUTOMOTIVE RELATED ITEMS
- VENDOR SPACES (INSIDE OR OUT) - \$30.00
- 12,000 SQUARE FEET INDOOR AREA
- CAR SALES - \$10.00 per car
- CRAFT SHOW & SALE (Saturday & Sunday) Contact Heidi Willison 613-267-0062
- CANTEEN by Lombardy Fairgrounds with food delivery to Vendor sites available.

CAR SHOW HIGHLIGHTS: (Sunday)

- ANTIQUE, CLASSIC & STREET RODS
 - DASH PLAQUES TO FIRST 100 ENTRIES
 - TROPHIES FOR TOP TWO CARS IN 15 CLASSES
 - DOOR PRIZE DRAW FOR SHOW CARS
 - REGISTRATION AT SHOW 8:00-12:00- **Free Registration**, Gate Admission only
 - SHOWTIME 11:00 a.m. -2:30 p.m
- CAR SHOW INFORMATION (SEE OVER) – Henry Schur 613-285-9930 (m)



GENERAL ADMISSION - \$5.00 CHILDREN 12yrs & under FREE

TEAR OFF AND RETURN BY MAY 15, 2024

VENDOR FLEA MARKET CRAFT SHOW
PARTICIPANT _____
ADDRESS _____
TELEPHONE # _____ AMOUNT ENCLOSED \$ _____

OF SPACES @\$30.00 EACH INDOOR (10'X12') OUTDOOR (20'X30')

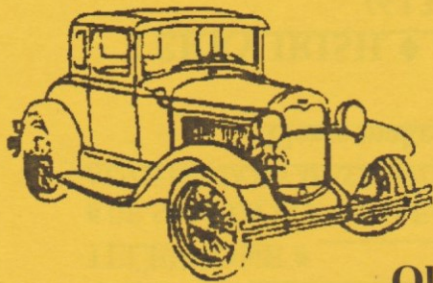
*NOTE: VENDORS MUST NOT LEAVE BEFORE 3:00PM **FLEA MARKET VENDORS DRAW HELD AT 3:00PM*

Please make cheques payable to ACCCC Rideau Lakes Region

MAIL TO

TERRY IRISH ♦ 442 HWY #29, SMITHS FALLS, ON K7A 4S5

(613) 283-3409 ♦ 34ford@hotmail.ca



CAR SHOW

Sunday, June 2, 2024

Open to all Cars and Trucks
Older Historical Vehicles are Encouraged

Class P2	North American Production to 1935
Class P3	North American Production to 1936 to 1948
Class P4	North American Production 1949 to 1956
Class P5	North American Production 1957 to 1962
Class P6	North American Production 1963 to 1968
Class P7	North American Production 1969 to 1976
Class P8	North American Production 1977 to 1985
Class P9	North American Production 1986 to date
Class P10	Stock Performance to date
Class P11	Stock Trucks (2& 4x4) to date
Class M1	Mild Custom / Modified Cars to date
Class M2	Mild Custom / Modified Trucks to date
Class S1	Special Interest ~ pro-street ~ race cars ~ kit cars ~ etc.
Class S2	Hot Rods
Class B1	British, European, Etc. to date

Vintage Vehicle Parade

Trophies for the top 2 entries of each class, Participant Judging
Special Awards
Peoples Choice
Presidents Choice
Camp Quality Trophy
Long Distance

Horseless Carriage Award (Years 1925 or Older)

Trailer Parking Available, No Trailers or Tents in Show Field
More information please call: Henry Schur Ph.# (613) 285-9930

"For Sale" Signs not allowed in Show Field

We ask as a courtesy to all, vehicles taking part in the Car Show stay on display until the Awards Presentation Ceremony is complete, before departing.